

FEATURES

1. Upgraded composite function

Specified-period measurement and total-time measurement can be monitored on a single unit.

2. High-performance compact sync motor

The accurately turning motor is employed to provide for longer period of measurement.

3. Common for 50/60 Hz power frequency

A lever is used to select 50 Hz or 60 Hz. There is no need to rearrange the control panel and other signal destinations.

4. Dimensions as per DIN 43700 standard

The units are in the 48 × 48 DIN standard size. They can be fitted in panels and give refined metallic appearance.

5. Easier wiring

The flat terminals (#187) are quick and easy to connect.

6. Rotary indicator

The rotary indicator makes one turn every 2 minutes for quick monitoring.

7. CE marking

The hour meters satisfy EMC directives (EN50081-2/ EN50082-2) and low-voltage directives (EN61010-1).

SPECIFICATIONS

| | | |
|---|--|--|
| Rated operating voltage | 12 V AC, 24 V AC, 48 V AC, 100 V AC, 110 V AC, 115 to 120 V AC, 200 V AC, 220 V AC, 240 V AC | |
| Operating voltage range | 85 to 115% of rated operating voltage | |
| Rated frequency | 50/60 Hz (selectable by switch) | |
| Counting range | [without reset indicator]0 to 99999.9 hours [with reset indicator]0 to 9999.9 hours | |
| Minimum time display | 0.1 hours (6 min) | |
| Rated power consumption | Approx. 1.5 W | |
| Initial insulation resistance (At 500 V DC) | Min. 100 MΩ; Between live and dead metal parts | |
| Initial breakdown voltage | 2,000 Vrms Between live and dead metal parts | |
| Max. temperature rise | 55°C 131°F | |
| Vibration resistance | Functional | 10 to 55 Hz: 1 cycle/min double amplitude of 0.5 mm (10 min on 3 axes) |
| Shock resistance | Functional | Min 98 m/s ² {10 G} (4 times on 3 axes) |
| | Destructive | Min 980 m/s ² {100 G} (5 times on 3 axes) |
| Ambient temperature | -10 to +50°C +14 to +122°F | |
| Ambient humidity | Max. 85% RH | |
| Weight | 160 g 5.64 oz | |

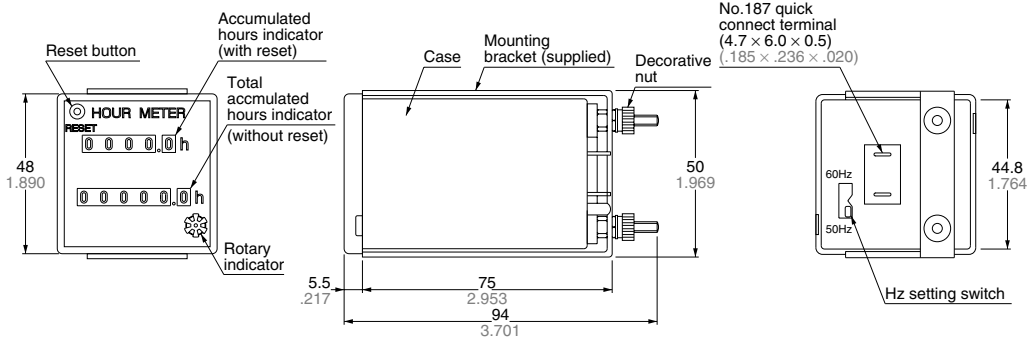
PRODUCT TYPE

| Type | Rated operating voltage | Part No. | | Rated operating voltage | Part No. | | Rated operating voltage | Part No. | |
|-------------|-------------------------|--------------|-------------|-------------------------|--------------|-------------|-------------------------|--------------|-------------|
| | | Silver panel | Black panel | | Silver panel | Black panel | | Silver panel | Black panel |
| TH40 series | 100V AC | TH401S | TH401 | 24V AC | TH404S | TH404 | 115 to 120V AC | TH407S | TH407 |
| | 200V AC | TH402S | TH402 | 48V AC | TH405S | TH405 | 220V AC | TH408S | TH408 |
| | 12V AC | TH403S | TH403 | 110V AC | TH406S | TH406 | 240V AC | TH409S | TH409 |

Note: If you want the CE marking on your products, specify "CE" at the end of the part No. when ordering.

DIMENSIONS

General tolerance: $\pm 1.0 \pm .039$ mm inch



WIRING DIAGRAM

Panel mounting

mm inch

• Panel cutout

